

LONDON 10 ROOM KIT

The London 10 room kit is designed for rooms up to approximately 120 sq ft (11.1 sq m), or can be combined with other products to treat larger spaces. Whether you are building a recording studio, home theater or boardroom, this easy to use kit is a perfect place to start.

The London 10 contains select Broadway panels that tackle problems affecting any room, such as primary reflections, flutter echo, and standing waves. In addition to acoustic panels, each London 10 room kit includes the corresponding mounting hardware and instructions for easy installation.

Broadway panels are made from high-density 6lb per cubic foot glass wool, offering nearly five times greater absorption than typical low cost foam alternatives. This means that you get more absorption with fewer panels, while assuring an even absorption curve throughout the frequency range. The London 10 room kit is available in black, beige or grey fabric or in Absolute White™ paintable finish. 20 panels included.



SPECIFICATIONS:

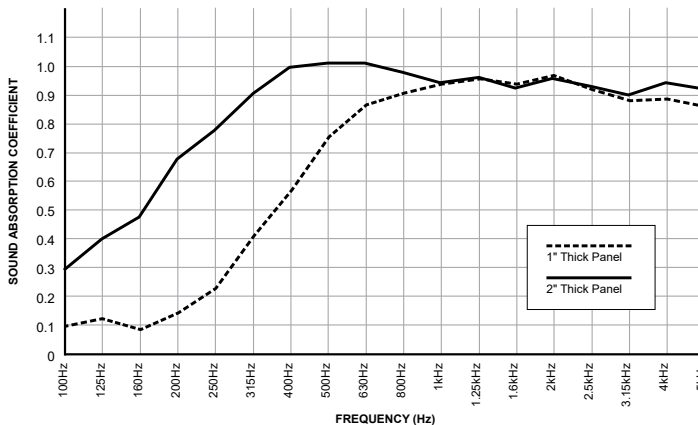
ORDER NUMBER	Z900-0100-XX (xx denotes color code 00=Black; 03= Beige; 08=Grey; 09=White)
SURFACE COVERAGE	44 sq/ft (4.1 sq/m)
RECYCLED CONTENT	Up to 51%
LEED ELIGIBLE	Yes

ABSORPTION CHARACTERISTICS:

Sound absorption coefficient data

PANEL DEPTH	125Hz	250Hz	500Hz	1kHz	2kHz	4kHz	NRC
1"(25mm) Depth*	0.17	0.28	0.81	1.00	1.02	0.95	0.80
2"(50mm) Depth*	0.45	0.83	1.07	1.00	1.01	1.00	1.00

* Testing performed by Riverbank Acoustical Laboratories. The test method conform explicitly with the requirements of the ASTM Standard Test Method for Sound Absorption and Sound Absorption Coefficients by the Reverberation Room Method: ASTM C 423-02a and E795-05.



FIRE & BURN PERFORMANCE:

COUNTRY	TEST STANDARD	CLASSIFICATION
FABRIC WRAP		
Canada	CAN/ULC-S102-03	Class A/1
USA	ASTM E84-09	Class A/1
Europe	EN 13501-1	A2-s1, d0
Australia / New Zealand	AS/NZS 1530.3	(I)0, (S)0, (H)0, (Sm)5
PAINTABLE		
Canada	CAN/ULC-S102-10	Class A/1
USA	ASTM E84-11b	Class A/1
Europe	EN 13501-1	B-s2, d0
Australia / New Zealand	AS/NZS 1530.3	(I)0, (S)0, (H)0, (Sm)3

KIT INCLUDES:

QTY	MODEL	SIZE	WEIGHT	EDGE
8	Control Columns	12 x 48 x 2" (305 x 1220 x 51mm)	2.7 lbs (1.2 kg) per panel	Beveled
12	Scatter Blocks	12 x 12 x 1" (305 x 305 x 25mm)	.75 lbs (.35 kg) per panel	Beveled
28	Surface Impaler	For mounting Control Columns and Scatter Blocks. Drywall anchors and screws included.		

APPLICATION:

